



HWI GROUP



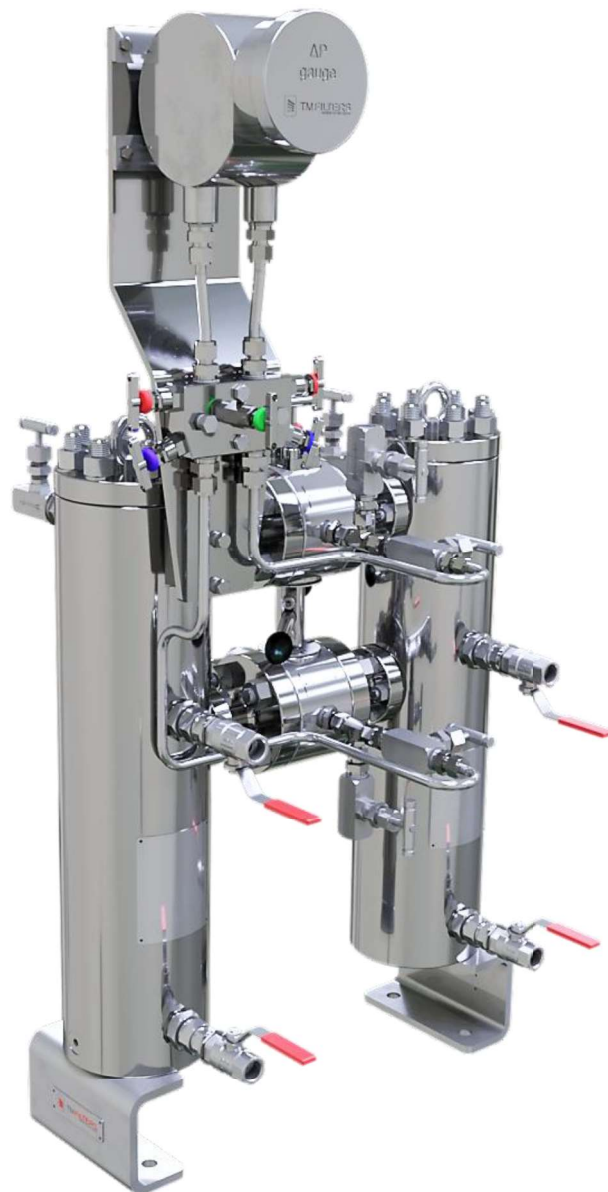
WE PROTECT YOUR
TURBOMACHINERY
EQUIPMENT



TM FILTERS

MEMBER OF HWI GROUP

TM Fuel Gas Filters



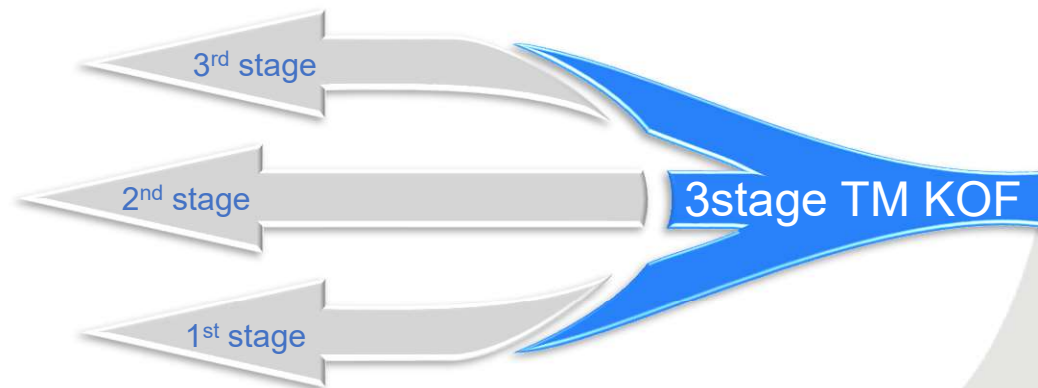
Fuel gas Filters

- Non Welded Design
- Custom Options
- ASME VIII div.1
- Single, Duplex configuration
- All exotic material available
- Multiple stages
 - TM Cyclone
 - TM Demister pad
 - TM High efficiency element
- All connections are available
- Available from ½" full bore

TM 3 Stage Filter System

Custom made options

- ✓ Connections types
- ✓ xx Liter Reservoir
- ✓ Stages
- ✓ Material of construction
- ✓ Instruments



3rd Stage: High Efficiency TM Filter Element

- ✓ Very fine particle and droplet removal
- ✓ Liquid loading up to 50 ppmw
- ✓ Laboratory grade separation efficiency >99.9% for particles >1 micron and liquid droplets
- ✓ High dirt holding capacity and low pressure drop due to pleated micro- and nanofiber technology

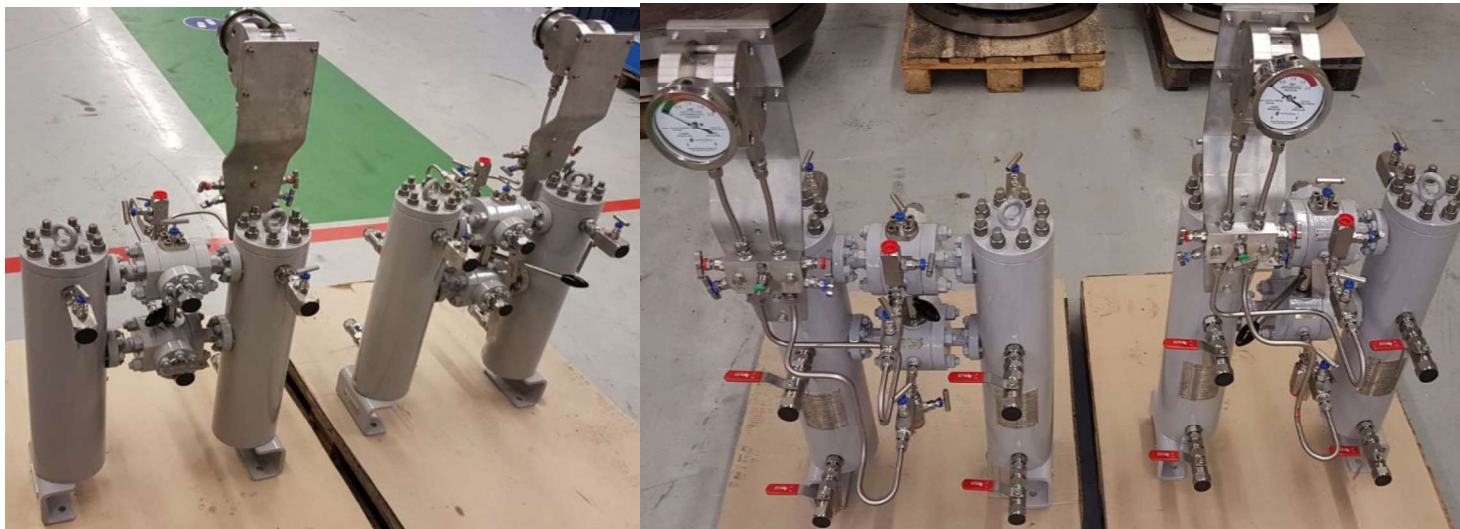
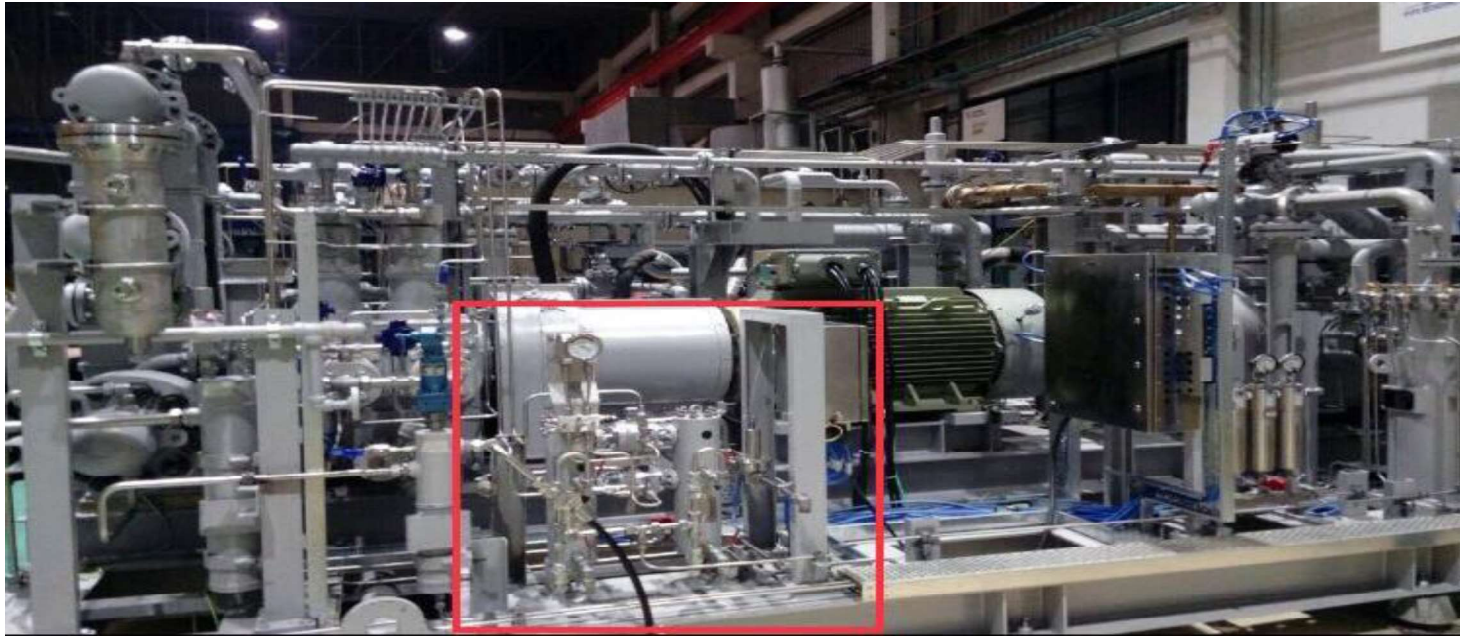
2nd Stage: Stainless Steel Demisting Pad

- ✓ Fine droplet removal
- ✓ Liquid loading capacity up to 3000 ppmw
- ✓ Self-cleaning by counter flow drainage of separated liquids
- ✓ High separation efficiency (>95%) for liquid droplets up to 5 micron
- ✓ Low pressure drop due to high porosity (up to 98% open volume)

1st Stage: Cyclone Pre-Separator

- ✓ Bulk particle and liquid removal
- ✓ High dirt and liquid loading capacity >5000 ppmw
- ✓ Low pressure drop and high efficiency for bulk particles and liquids (typical efficiency > 90%)

TM HP Fuel Gas Duplex Filters



Project LGEL Edinburgh 01

End User: Hyundai Mipo Dockyard Co. Ltd.
Year Supplied: 2017
Category: LNG Carrier
Type: 2x HP Duplex LNG Filters (245 Bar)
Compressor OEM: Burckhardt Compression
Pressure Vessel Code: ASME VIII Div.2 & Lloyds
Marine Pressure Vessel Rules

Certified: Lloyds Marine
Material Certification: 3.2

